

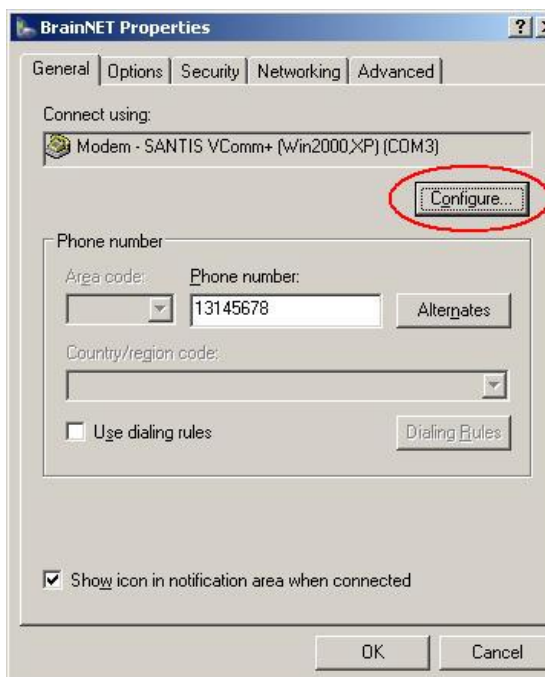
Configuration ISDN Dialer

1. Use the shortcut to establish an internet connection with brain.
2. (Fig 5.1) will appear on the screen.
3. Click Properties.

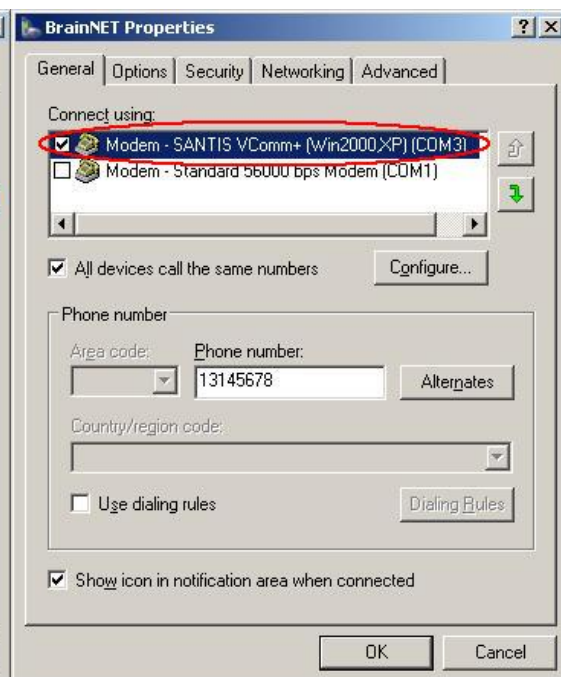


(Fig 5.1)

4. In properties window, you will see the modem installed previously. (Fig 5.2a)
5. If you have more than one modems installed, make sure the ISDN modem you installed previously to connect to Brain is selected. (Fig 5.2b)
6. Click Configure.

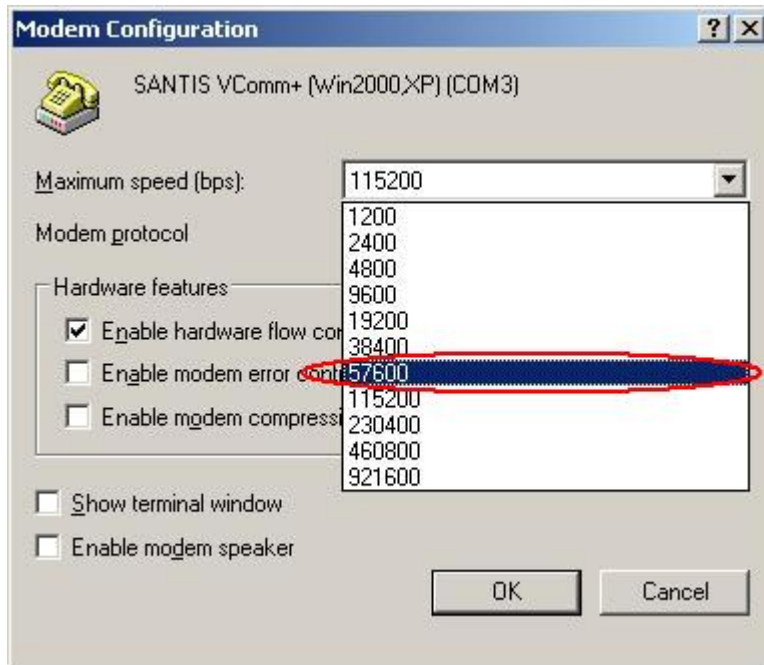


(Fig 5.2a)



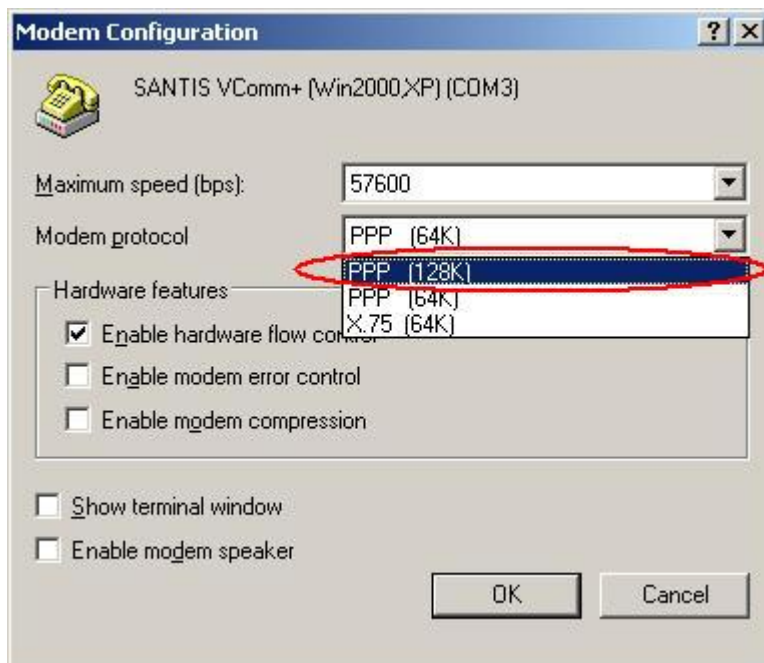
(Fig 5.2b)

7. In Modem Configuration, select 57600 as maximum speed (bps). (Fig 5.3)



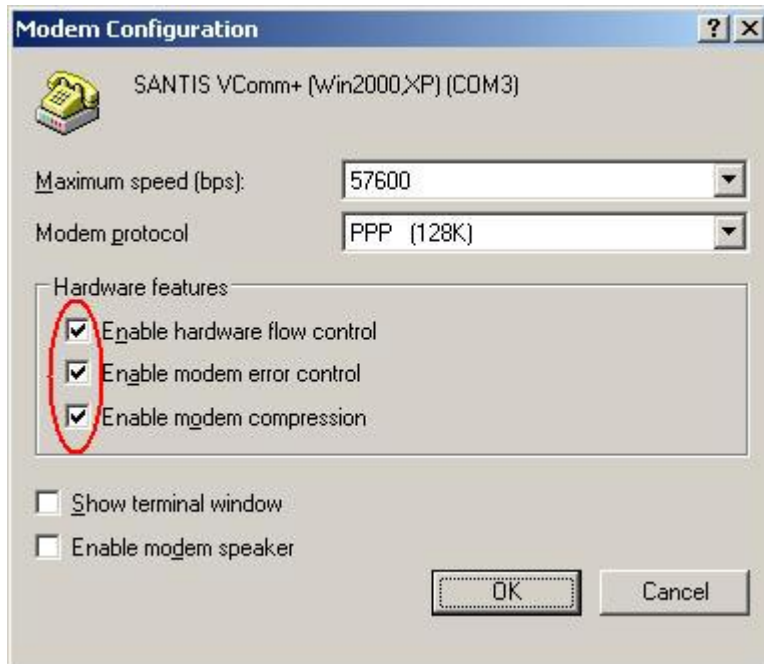
(Fig 5.3)

8. If you have a 128K package, select PPP (128K) as modem protocol. If you a 64K package, make sure you have selected PPP (64K) as modem protocol. (Fig 5.4)



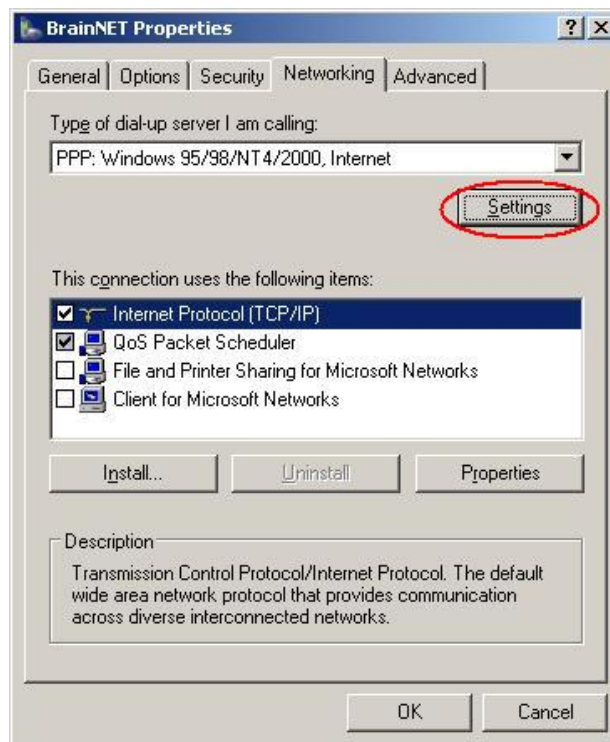
(Fig 5.4)

9. Make sure you have checked all the three hardware features available. (Fig 5.5)
10. Click OK.



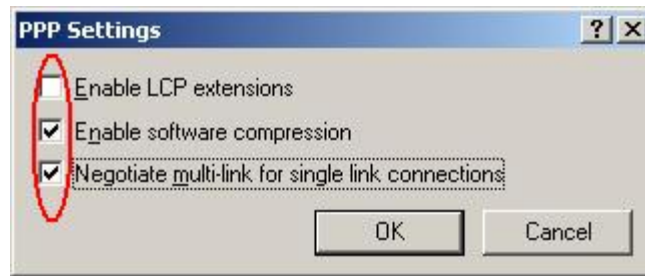
(Fig 5.5)

11. In Connection properties, select the Networking tab.
12. Make sure you have selected "PPP: Windows 95/98/NT4/2000, Internet" as the type of server to be called. (Fig 5.6)
13. Click Settings.



(Fig 5.6)

14. In PPP settings, make sure you have selected the options listed below. (Fig 5.7)
15. Click OK.



(Fig 5.7)

16. Close the properties sheet of the connection.
17. You can now start using your ISDN connection.