

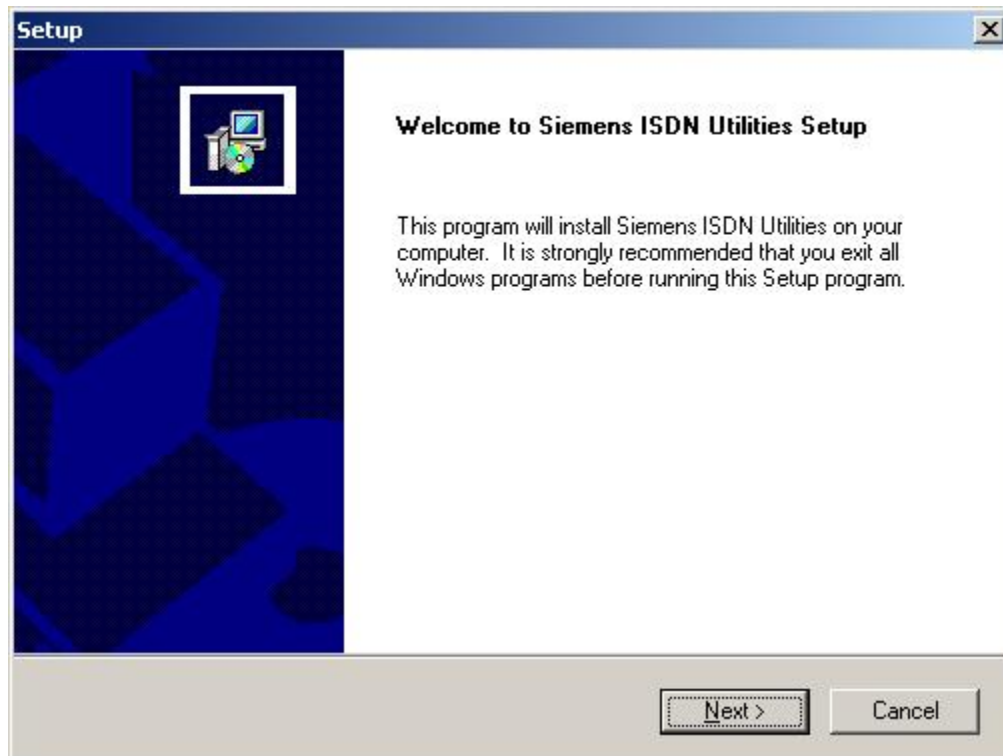
Siemens ISDN Utilities Installation

1. Once the drivers for your modem are installed, the setup for Siemens ISDN utilities will start automatically.
2. Select the language in which you want setup to interact with you. By default English is selected. (Fig 2.1)
3. Click OK.



(Fig 2.1)

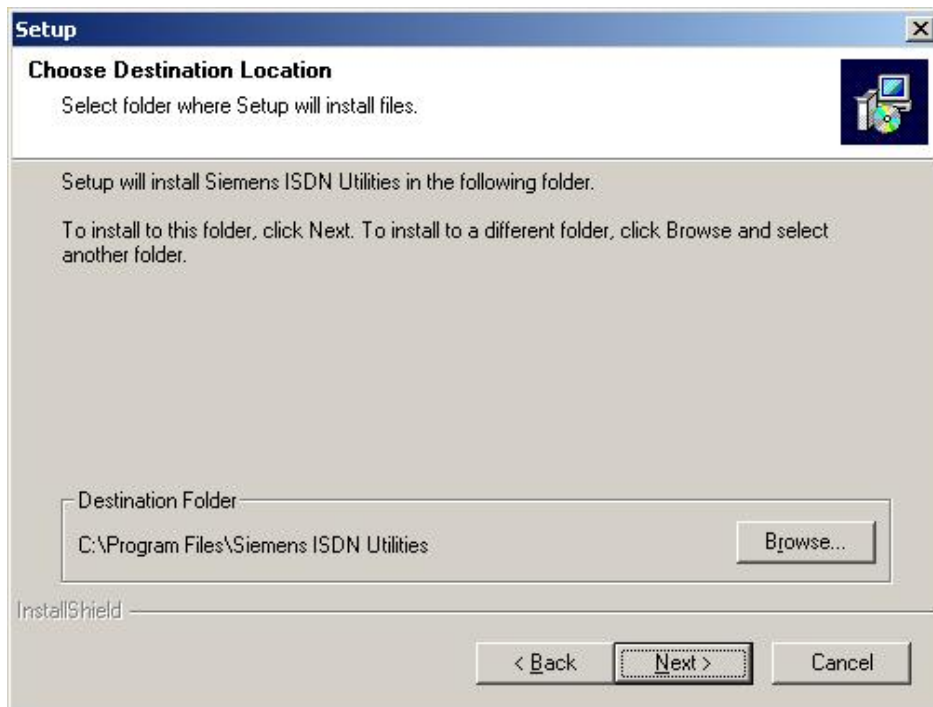
4. After you click OK, a window will appear informing you that the program will install Siemens ISDN utilities on your computer. Follow the on screen instructions to begin installing the utilities for your SANTIS modem. (Fig 2.2)
5. Click Next.



(Fig 2.2)

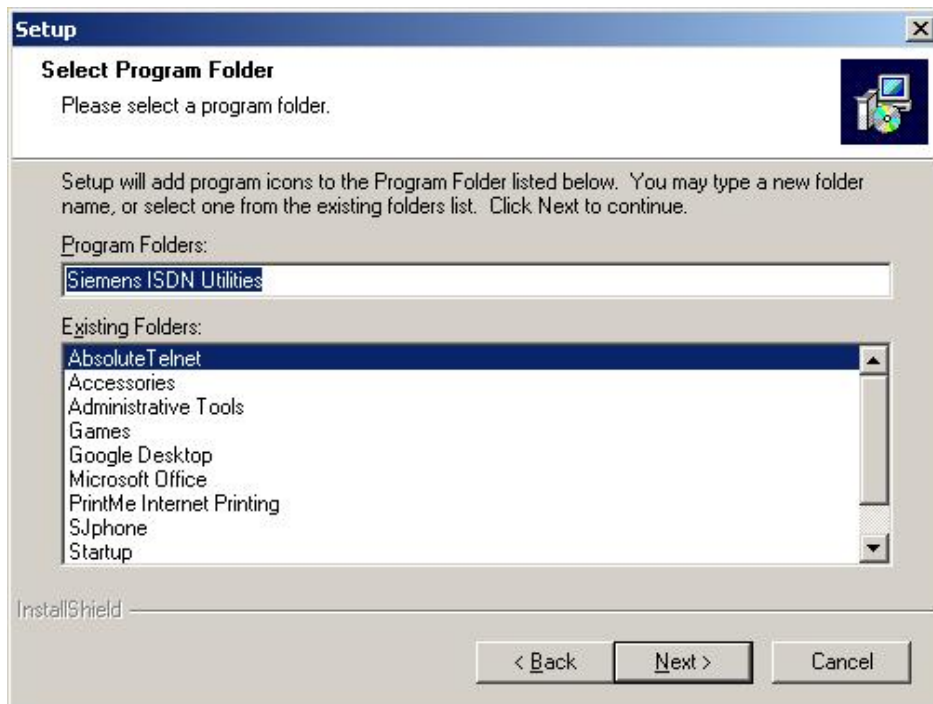
6. After you click Next, a window will appear allowing you to choose the location where you want the utilities to be installed. (Fig 2.3)

7. If you want to change the destination folder, click Browse and enter the location where you want the utilities to be installed.
8. Click Next.



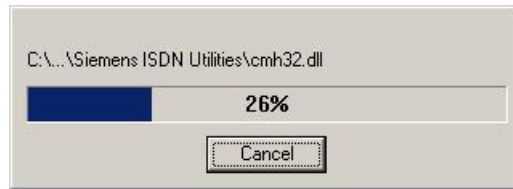
(Fig 2.3)

9. After you click Next, the setup will allow you to select the program folder. (Fig 2.4)
10. Click Next.



(Fig 2.4)

11. Once you click Next, setup will start copying files into the destination folder. (Fig 2.5)



(Fig 2.5)

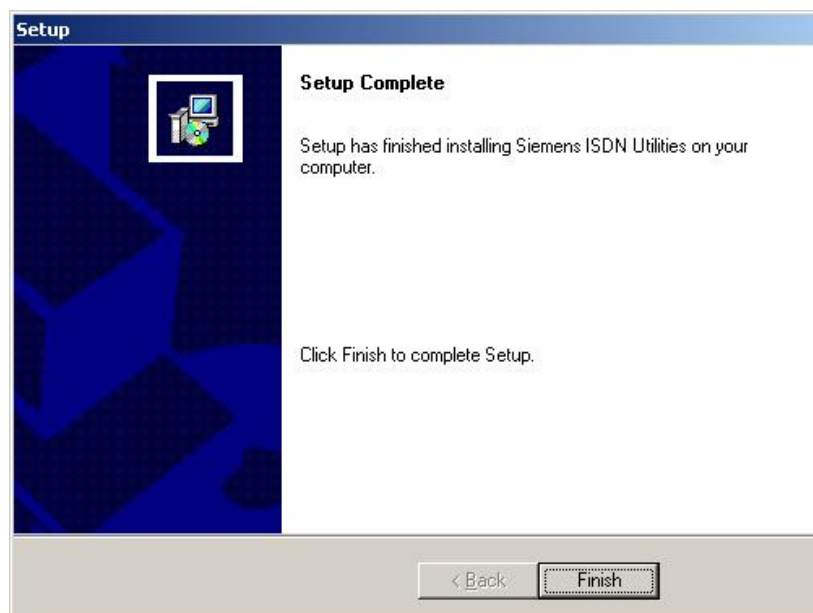
12. While copying files, setup will display a warning message (Fig 2.6). Choose “Continue Anyway”.



(Fig 2.6)

13. After the setup has completed the file copying process, a window will appear informing you that setup has completed installing the ISDN Utilities on your computer.

14. Choose Finish to complete the setup process. (Fig 2.7)



(Fig 2.7)

15. Once the setup is completed, the CAPI Monitor will be launched automatically and two red icons will appear in the taskbar showing the channels of the ISDN modem. (Fig 2.8)
16. Red means the modem is connected and the channel is free. You can use it for fax, phone or the regular dialup.
17. Pink means that your ISDN modem is not connected to the computer via USB cable.
18. Green means that the channel is being used for the ISDN connection with the ISP.



(Fig 2.8)