

## SANTIS ISDN Modem Driver Installation

1. Connect your SANTIS modem to any free USB port of your PC.
2. Connect the power cord of the modem to any free power outlet near your computer.
3. Turn on the modem.
4. An icon will appear in the Windows taskbar notifying you that Windows has found a new hardware connected to your computer (Fig 1.1).



(Fig 1.1)

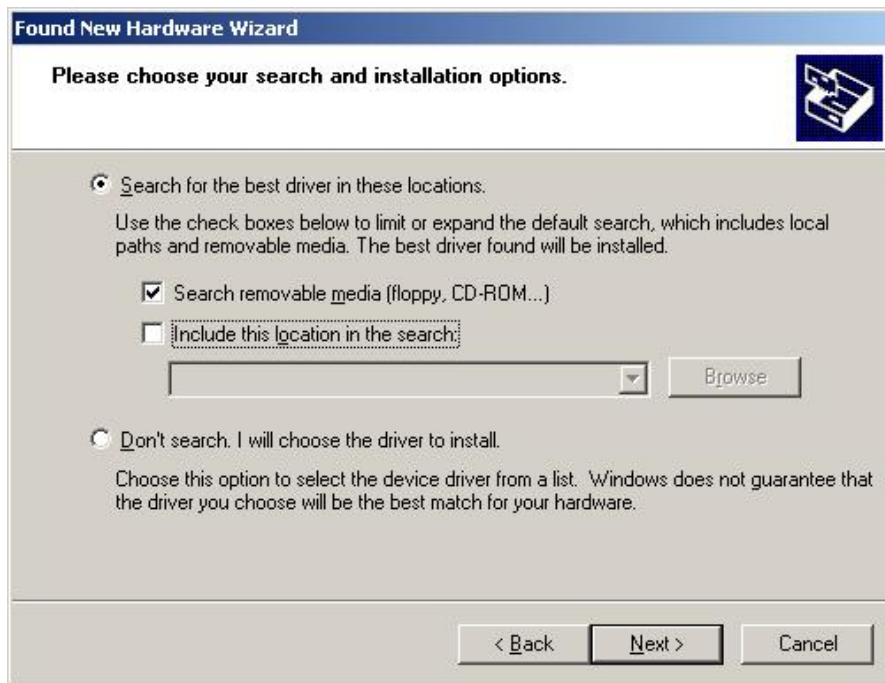
5. After few seconds "Found New Hardware Wizard" window will appear asking you how to install the drivers for the new hardware installed.
6. Select "Install from a list of specific location (Advanced)" and click Next. (Fig 1.2)



(Fig 1.2)

7. After you click Next, a second window will appear asking you to choose your search and installation options.
8. Insert the CD that came with your SANTIS modem into the CD-ROM drive.

9. Select "Search for the best driver in these locations" and make sure that "Search removable media (floppy, CD-ROM...)" checkbox is checked.
10. Click Next. (Fig 1.3)



(Fig 1.3)

11. After you click Next, the wizard will show a window showing the search progress. (Fig 1.4)



(Fig 1.4)

12. As soon as the wizard locates the drivers for the modem, it automatically begins installing the necessary files into your windows folder. (Fig 1.5)



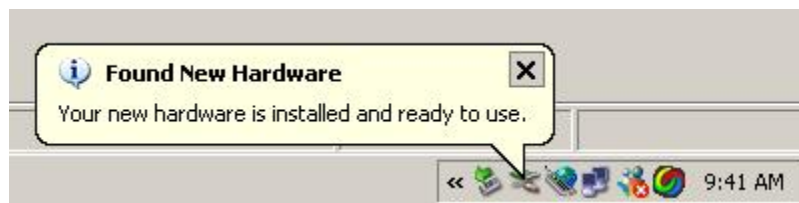
(Fig 1.5)

13. After the wizard has finished installing the files, it will notify you that it has successfully installed the software required for your hardware. (Fig 1.6)
14. Click Finish.



(Fig 1.6)

15. After the hardware installation wizard completes successfully, an icon appears in the taskbar notifying you that your new hardware is installed and ready to use. (Fig 1.7)



(Fig 1.7)