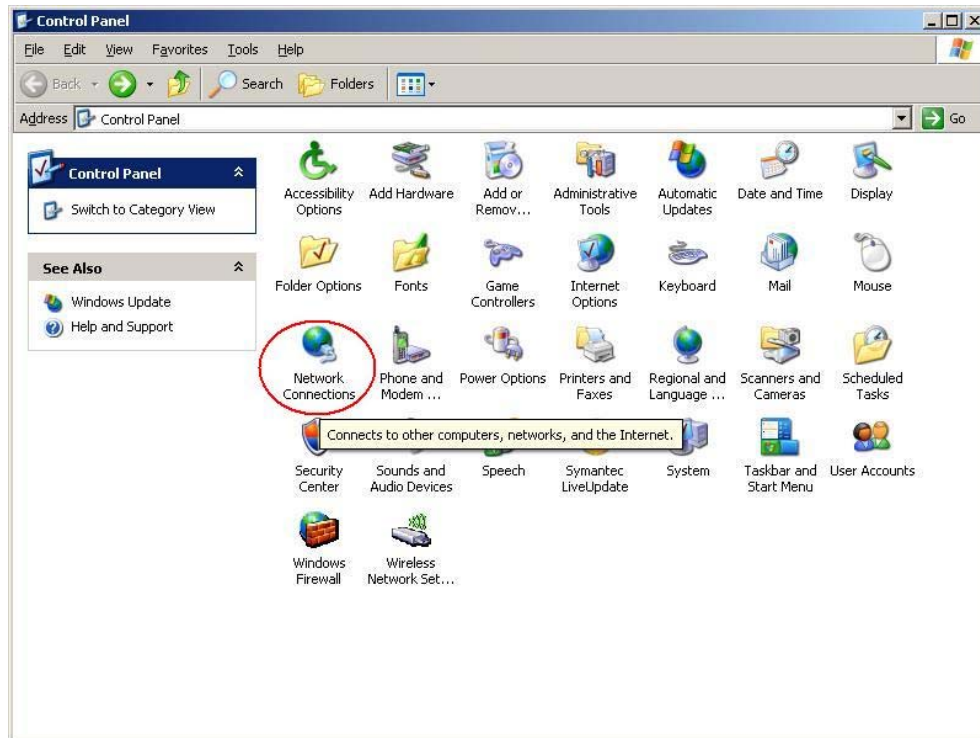


Creating an ISDN Dialer (Classic View)

1. Start the control panel applet.
2. Select "Network Connections". (Fig 4.1)



(Fig 4.1)

3. In the Network Connections window, select create a new connection. (Fig 4.2)



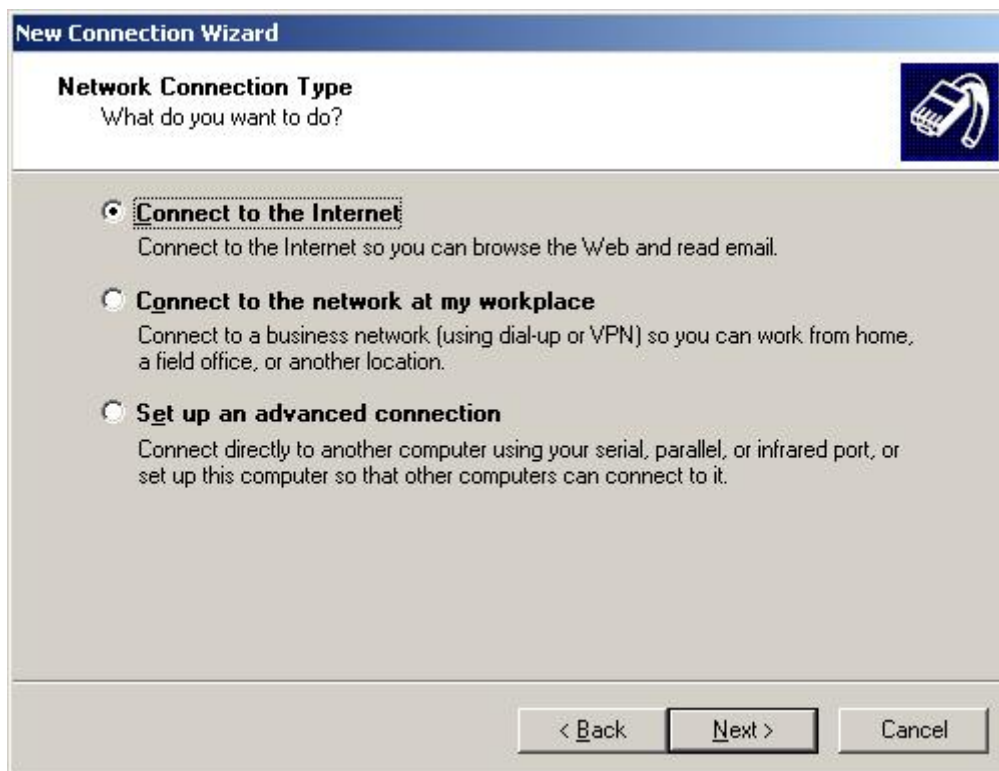
(Fig 4.2)

4. A new connection wizard will start. (Fig 4.3)
5. Click Next.



(Fig 4.3)

5. In the next window, select "Connect to the Internet". (Fig 4.4)
6. Click Next.



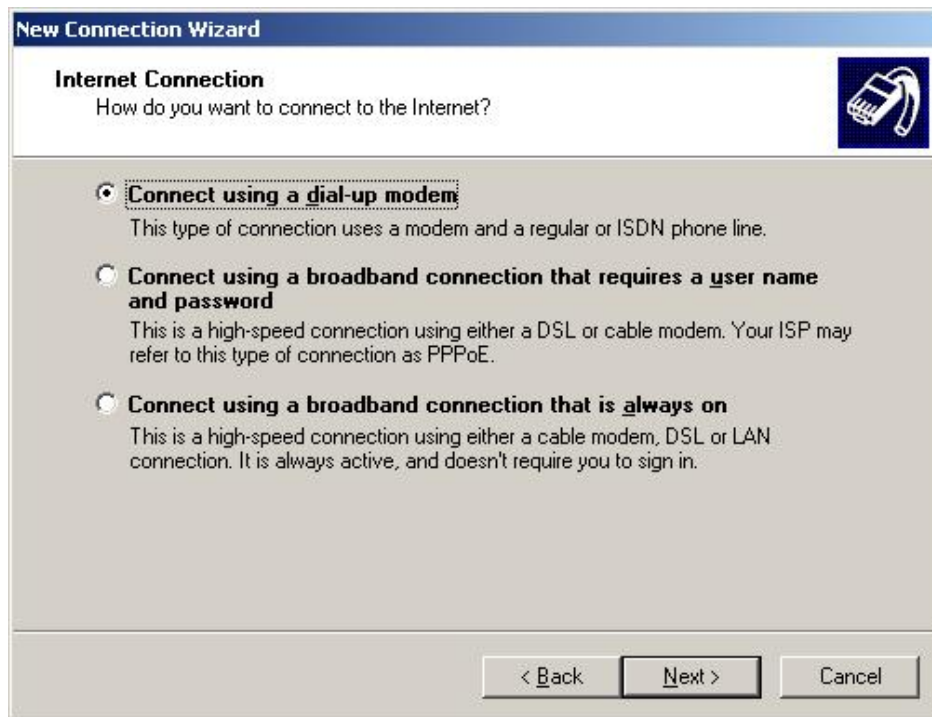
(Fig 4.4)

7. In the next window, select "Set up my connection manually". (Fig 4.5)
8. Click Next.



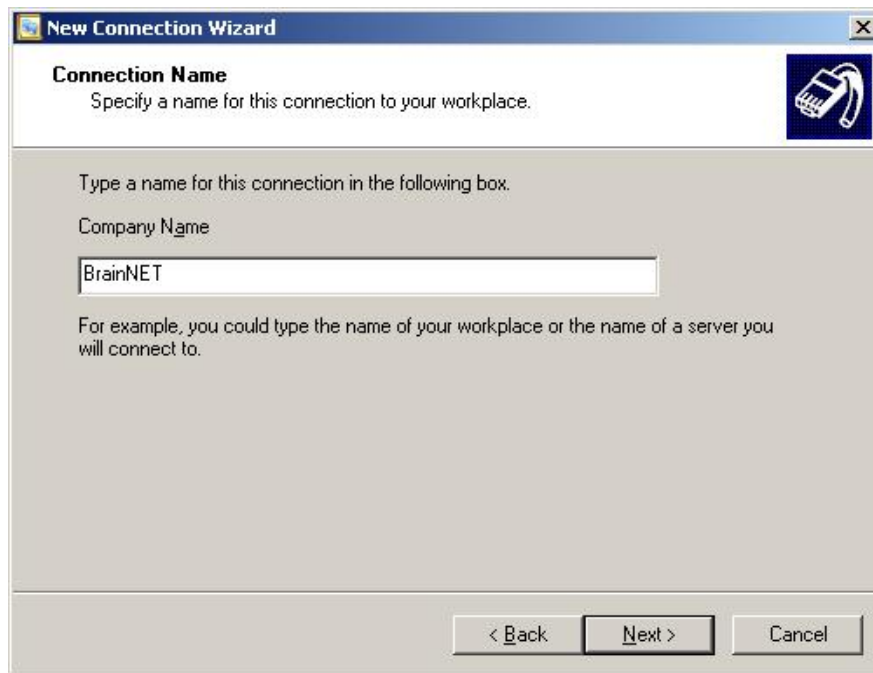
(Fig 4.5)

9. In the next window, select "Connect using a dial-up modem." (Fig 4.6)
10. Click Next.



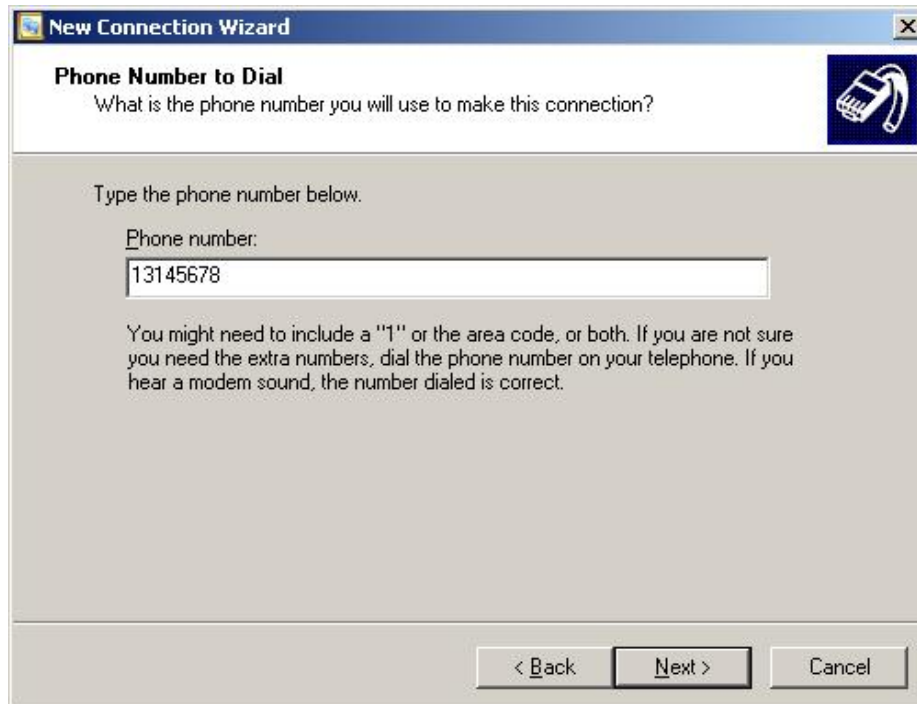
(Fig 4.6)

11. In the next window, type BrainNET in company name. (Fig 4.7)
12. Click Next.



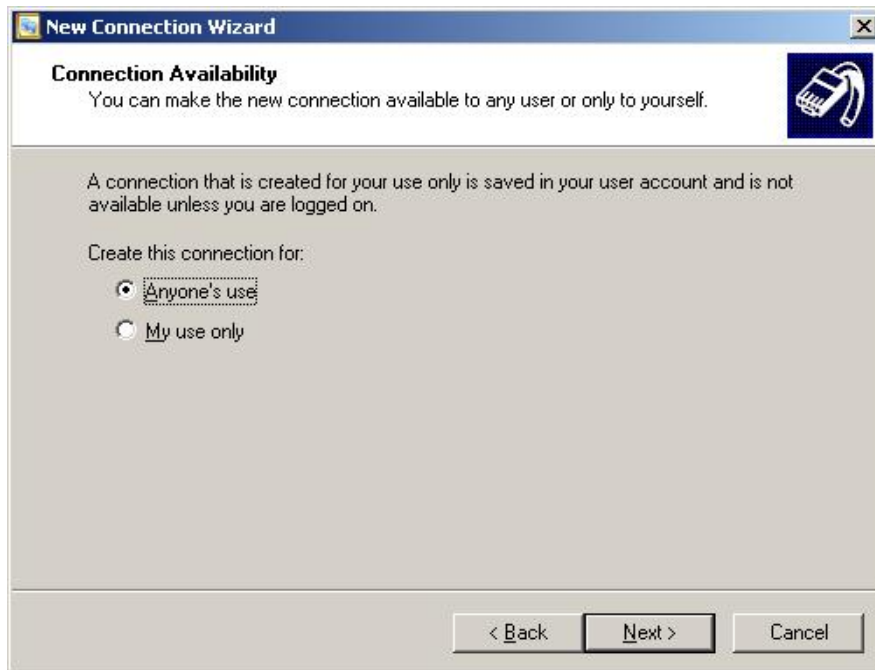
(Fig 4.7)

13. Next, type 13145678 or 13108888 in phone number field. (Fig 4.8)
14. Click Next.



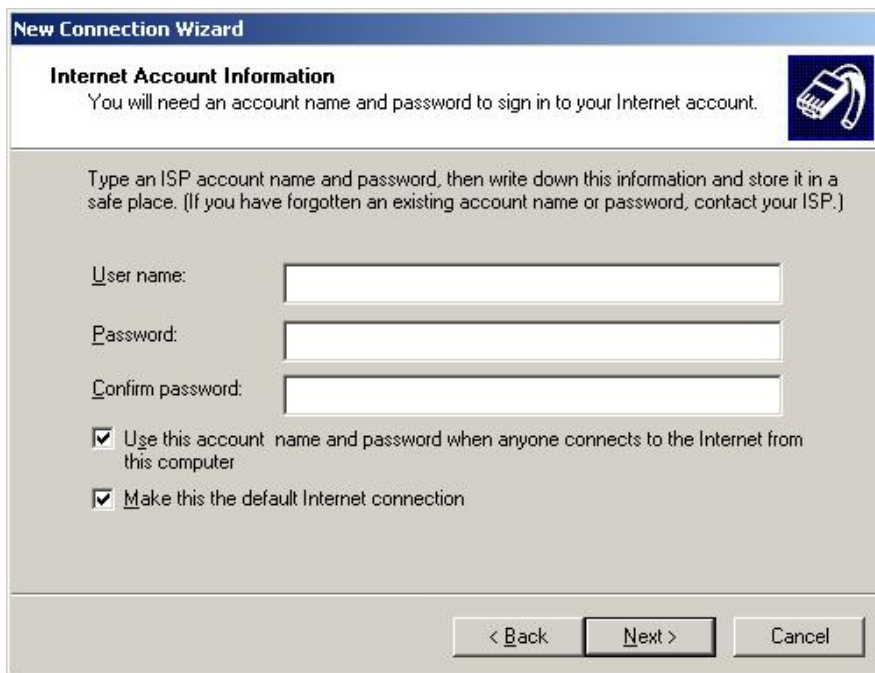
(Fig 4.8)

15. In the next window, choose whether you want all the users of the computer to use this connection or only you are allowed to use this connection. (Fig 4.9)
16. Click Next.



(Fig 4.9)

17. In the next window, the wizard will ask for the username and password of the connection. Enter the username and password provided by BrainNET. (Fig 4.10)
18. Click Next.



(Fig 4.10)

19. In the next window, the wizard will inform you that you have completed all the steps required to make the connection. (Fig 4.11)
20. Click Finish



(Fig 4.11)