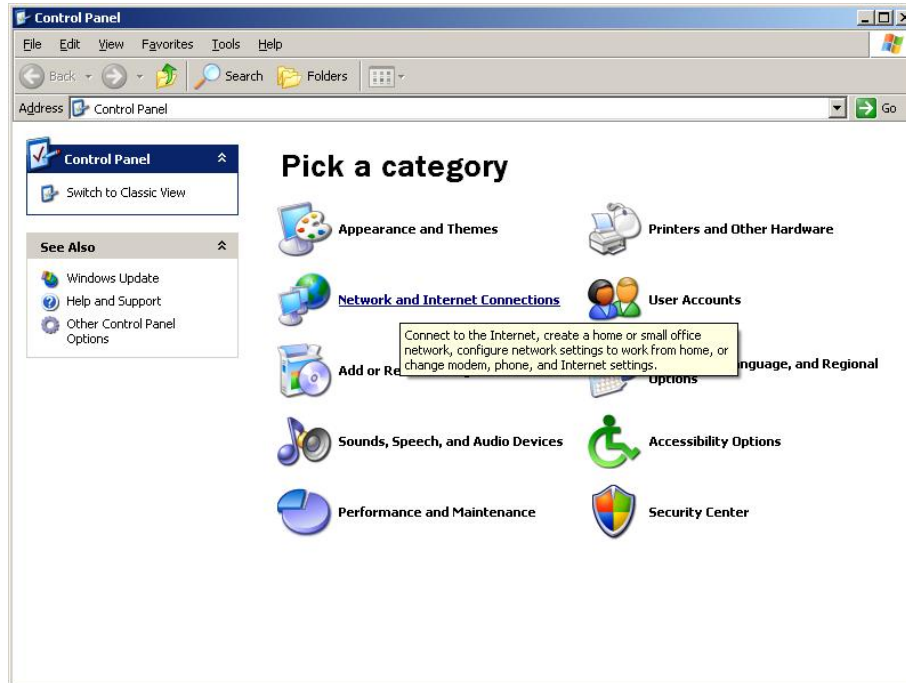


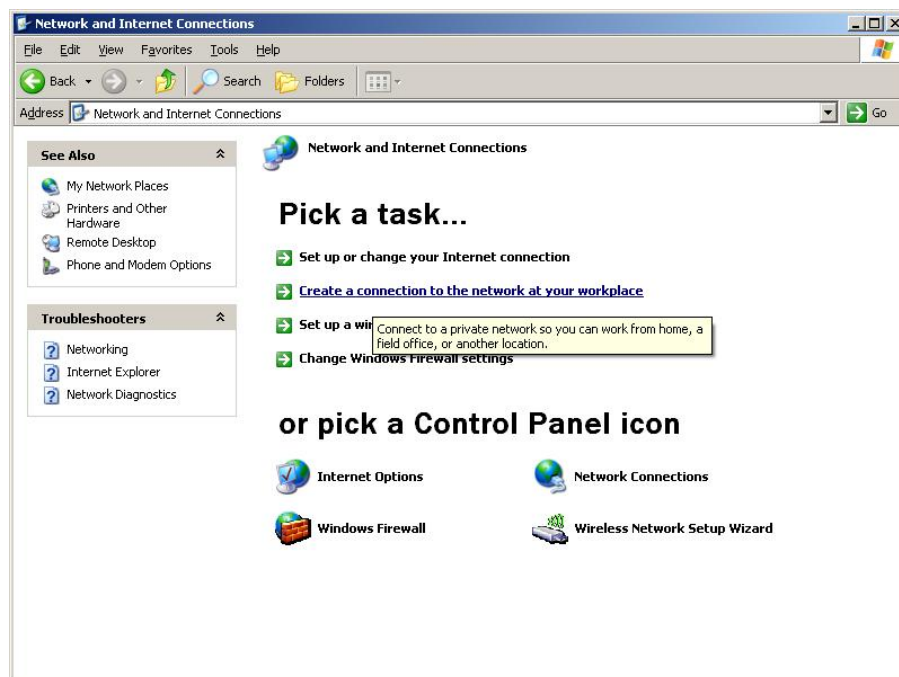
Creating an ISDN Dialer (Category View)

1. Start the Control Panel applet.
2. Choose "Network and Internet Connections". (Fig 3.1)



(Fig 3.1)

3. In the Network and Internet Connections Window, select "Create a connection to the network at your workplace". (Fig 3.2)



(Fig 3.2)

4. Once you click on the link, a new connection wizard will appear acquiring about what type of connection you want. (Fig 3.3)
5. Select "Dial-up Connection" and click next.



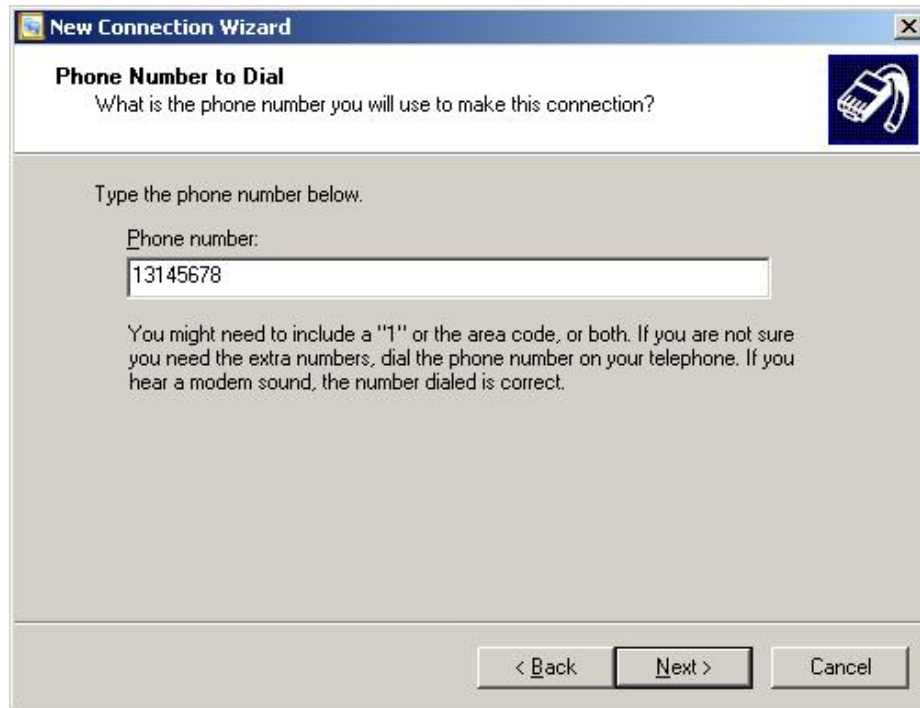
(Fig 3.3)

6. In the next window, type BrainNET in company name. (Fig 3.4)
7. Click Next.



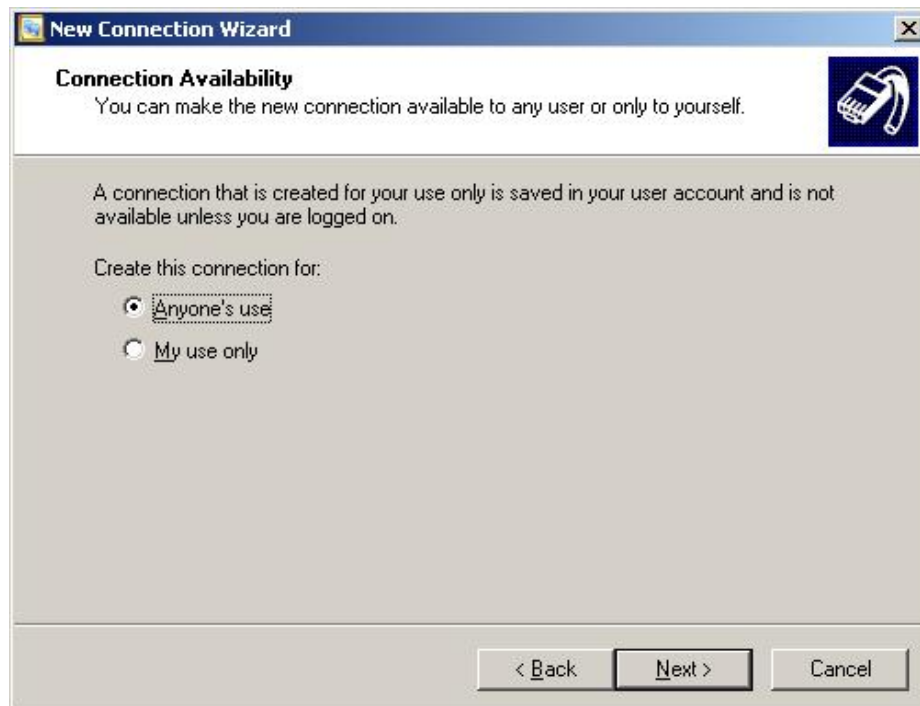
(Fig 3.4)

8. Next, type 13145678 or 13108888 in phone number field. (Fig 3.5)
9. Click Next.



(Fig 3.5)

10. In the next window, choose whether you want all the users of the computer to use this connection or only you are allowed to use this connection. (Fig 3.6)
11. Click Next.



(Fig 3.6)

12. In the next window, the wizard will inform you that you have completed all the steps required to make the connection. (Fig 3.7)
13. Click Finish.



(Fig 3.7)