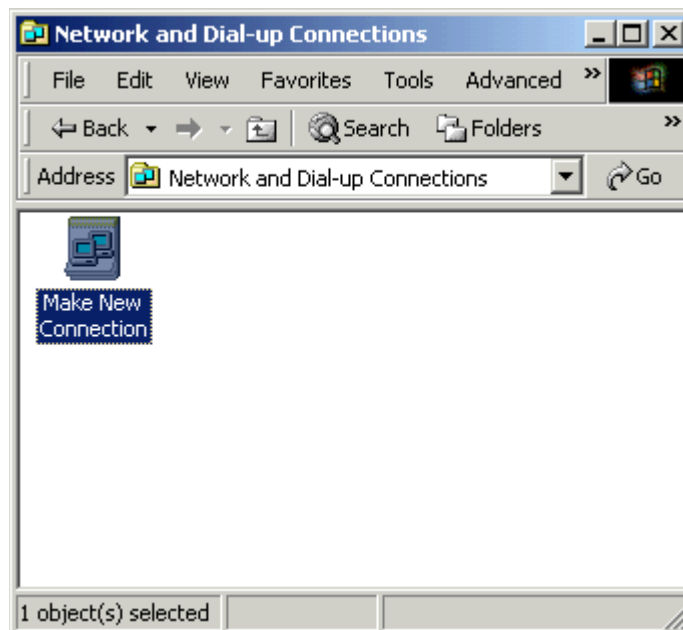


Windows 2000 – Creating a dialup connection

1. Click on Start menu, select Settings and click Control Panel.
2. Click on Network and Dial-up Connections.



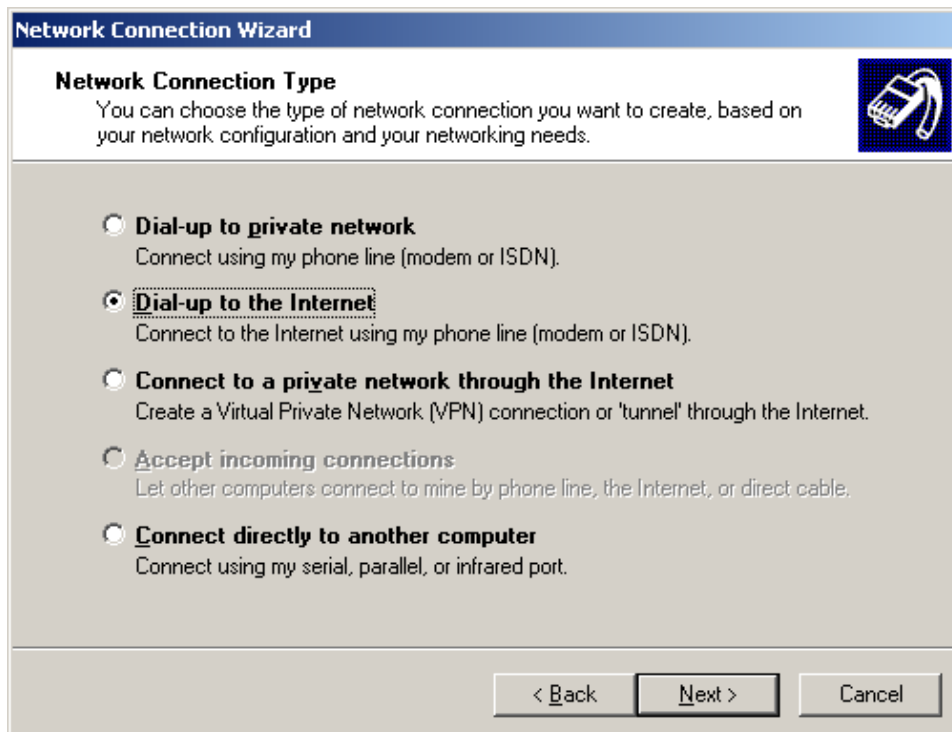
3. Click on "Make New Connection" icon.
4. Click Next.



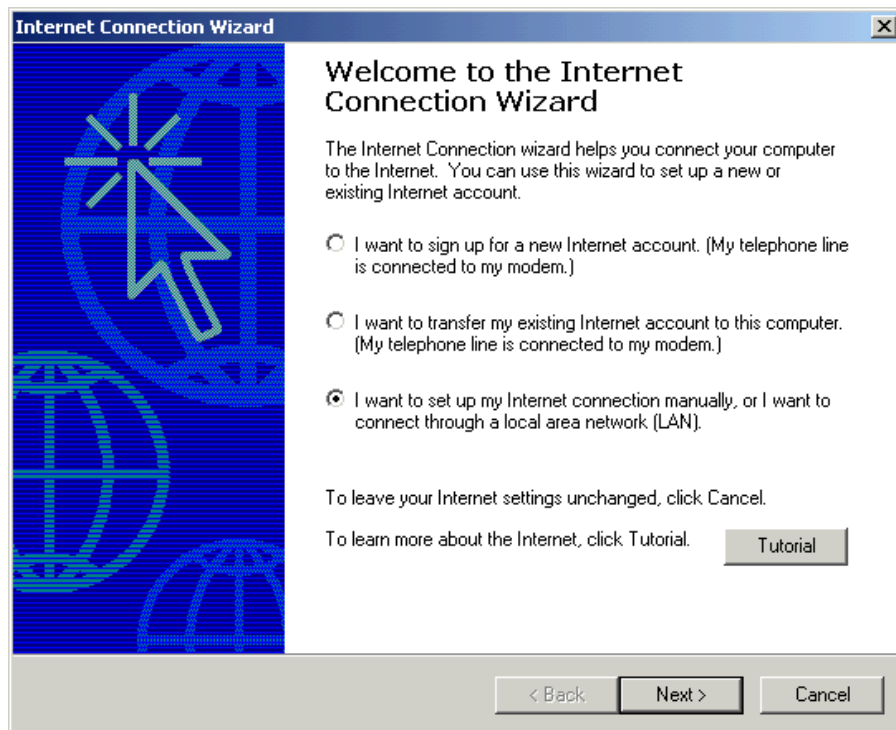
5. A Network Connection Wizard will start to guide you through the steps of creating a new connection.
6. Click Next.



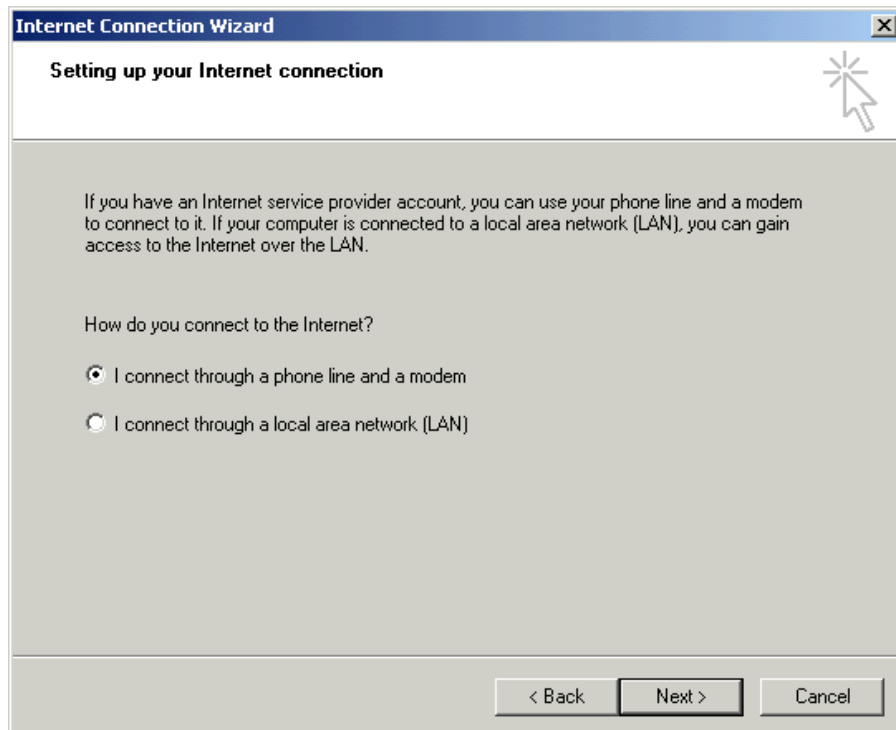
7. Select "Dial-up to the Internet" as the connection type.
8. Click Next.



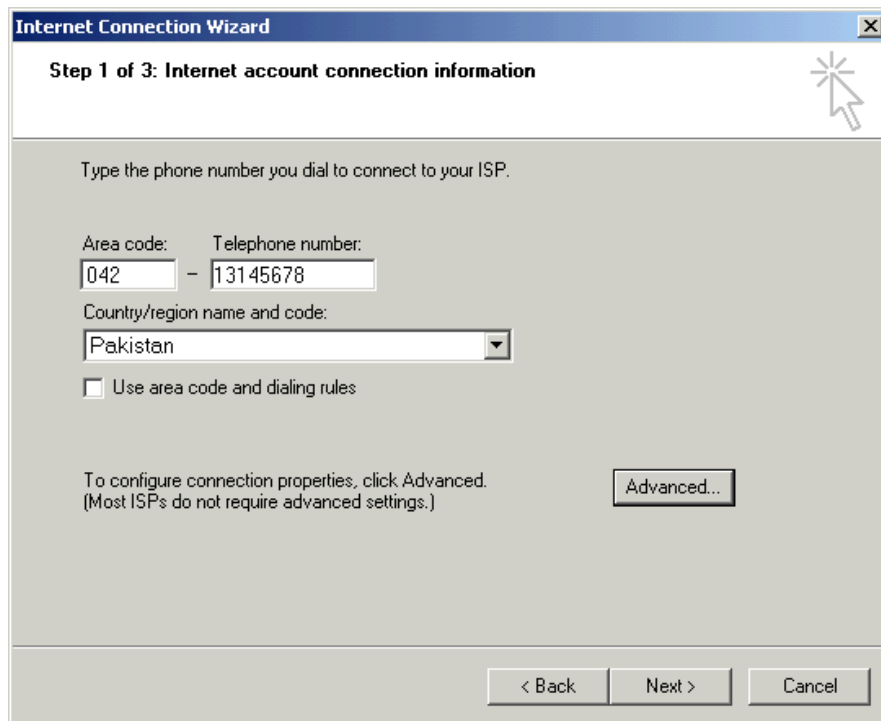
9. Select "I want to set up my Internet connection manually, or I want to connect through a local area network (LAN)."
10. Click Next.



11. On the next screen select "I connect through a phone line and a modem".
12. Click Next.



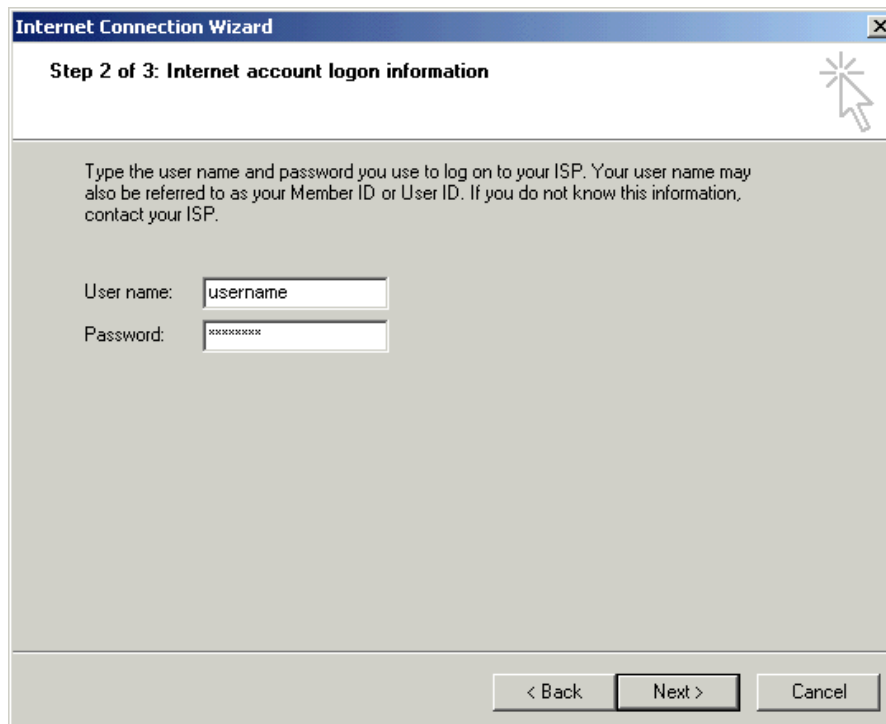
13. Next, enter 13145678 / 13145679 in the "Telephone number" field.
14. Click Next.



The screenshot shows the "Internet Connection Wizard" window, titled "Step 1 of 3: Internet account connection information". The window has a blue title bar with a close button (X) in the top right corner. The main content area is light gray and contains the following elements:

- Instruction: "Type the phone number you dial to connect to your ISP."
- Form fields: "Area code:" with a text box containing "042", and "Telephone number:" with a text box containing "131 45678".
- Form field: "Country/region name and code:" with a dropdown menu showing "Pakistan".
- Checkbox: "Use area code and dialing rules" which is currently unchecked.
- Text: "To configure connection properties, click Advanced. (Most ISPs do not require advanced settings.)"
- Button: "Advanced..."
- Navigation buttons at the bottom: "< Back", "Next >", and "Cancel".

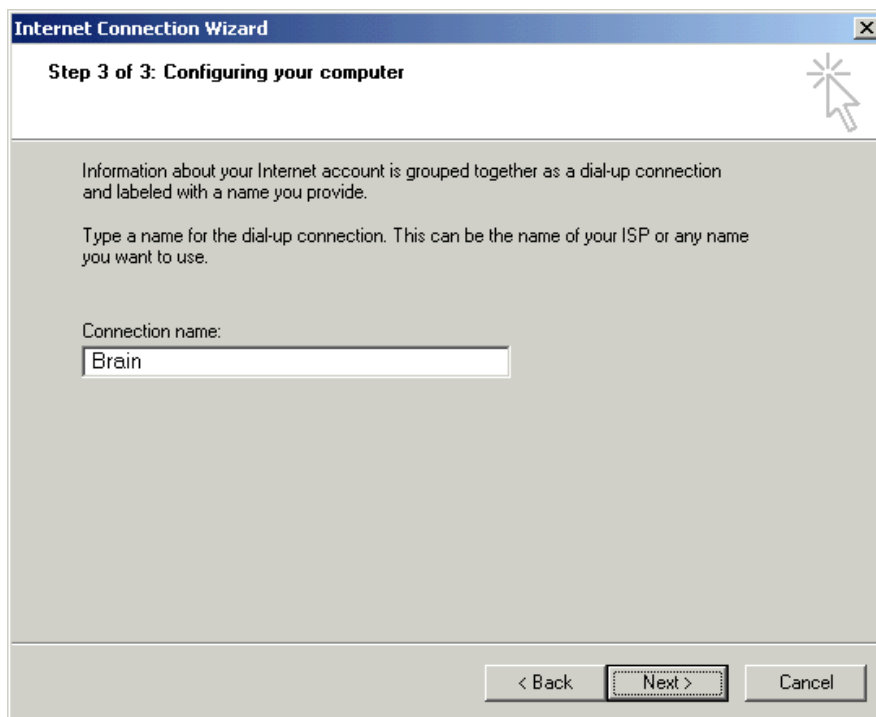
15. Next, enter the username provided by Brain in the "User name:" field.
16. Enter the password in the "Password:" field
17. Click Next.



The screenshot shows the "Internet Connection Wizard" window, titled "Step 2 of 3: Internet account logon information". The window has a blue title bar with a close button (X) in the top right corner. The main content area is light gray and contains the following elements:

- Instruction: "Type the user name and password you use to log on to your ISP. Your user name may also be referred to as your Member ID or User ID. If you do not know this information, contact your ISP."
- Form fields: "User name:" with a text box containing "username", and "Password:" with a text box containing "*****".
- Navigation buttons at the bottom: "< Back", "Next >", and "Cancel".

18. In the next step, enter "Brain" in the "Connection name:" field.
19. Click Next.



20. Next, a dialog will inform you that the internet connection wizard has completed successfully.
21. Click Finish.

